



Monograph

November 07

Tim Flach

Equus Project

Monograph is a monthly publication from Creative Review, provided as an additional benefit to all subscribers. Each month, it showcases a personal project or body of work. Monograph is distributed with subscribers' copies of the magazine only and will not appear in newsstand copies.

These 17 images are from the Equus project, which I have worked on for 18 months and will continue to do so for another six. It will become a book of about 300 pages.

Horses are more integral to human history than any other animal; my journey through the subject has taken me from Mongolia to Arabia, from the marwari desert horses in Rajasthan to the mustangs in the Rockies. I have gone from underwater photography in the pool of the royal yard of Dubai to thermal imaging on the hallowed turf of Newmarket.

The subject was approached both pictorially and conceptually (the selection here is strongly of the latter tendency). I want to explore the horse as a subject, more than make this a purely artistic investigation.

Masks are by nature intriguing. In human portraiture they are highly emotive. With horses, the equine mask seems particularly ambiguous. The fly net (p6) at first viewing could look like a fetish; the horse wearing what looks like a boxing mask (p4) is about to have an eye operation.

The embryos (pp8-12) were shot at a department of Cambridge University. At day 30 they are almost human-like; at day 64 like a porcelain figurine; at day 84 it takes on a gestural quality. The day 10 embryo, the only living one,

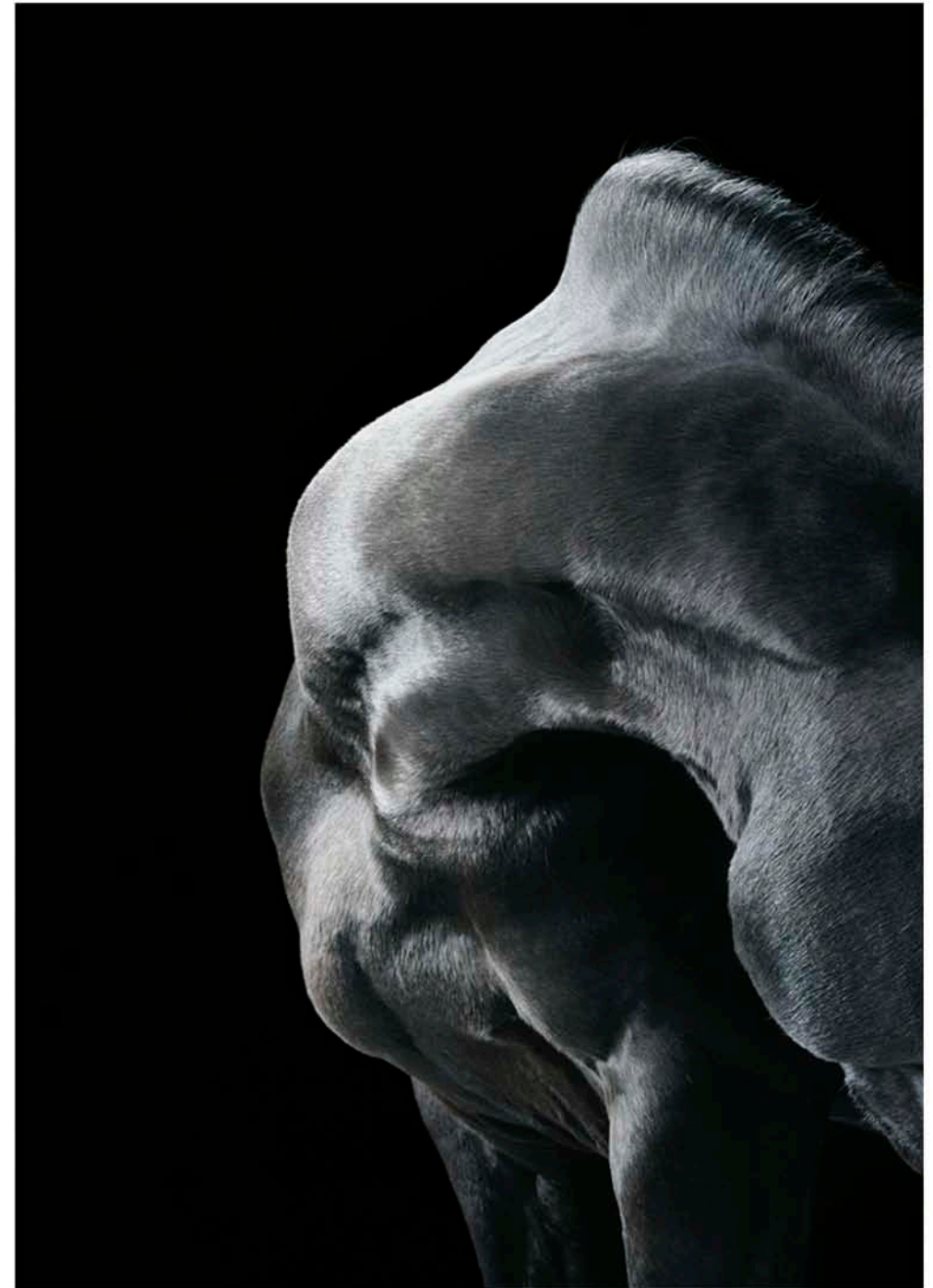
is in-transit shot in embryonic fluid. As I write this copy it is growing inside the surrogate mare.

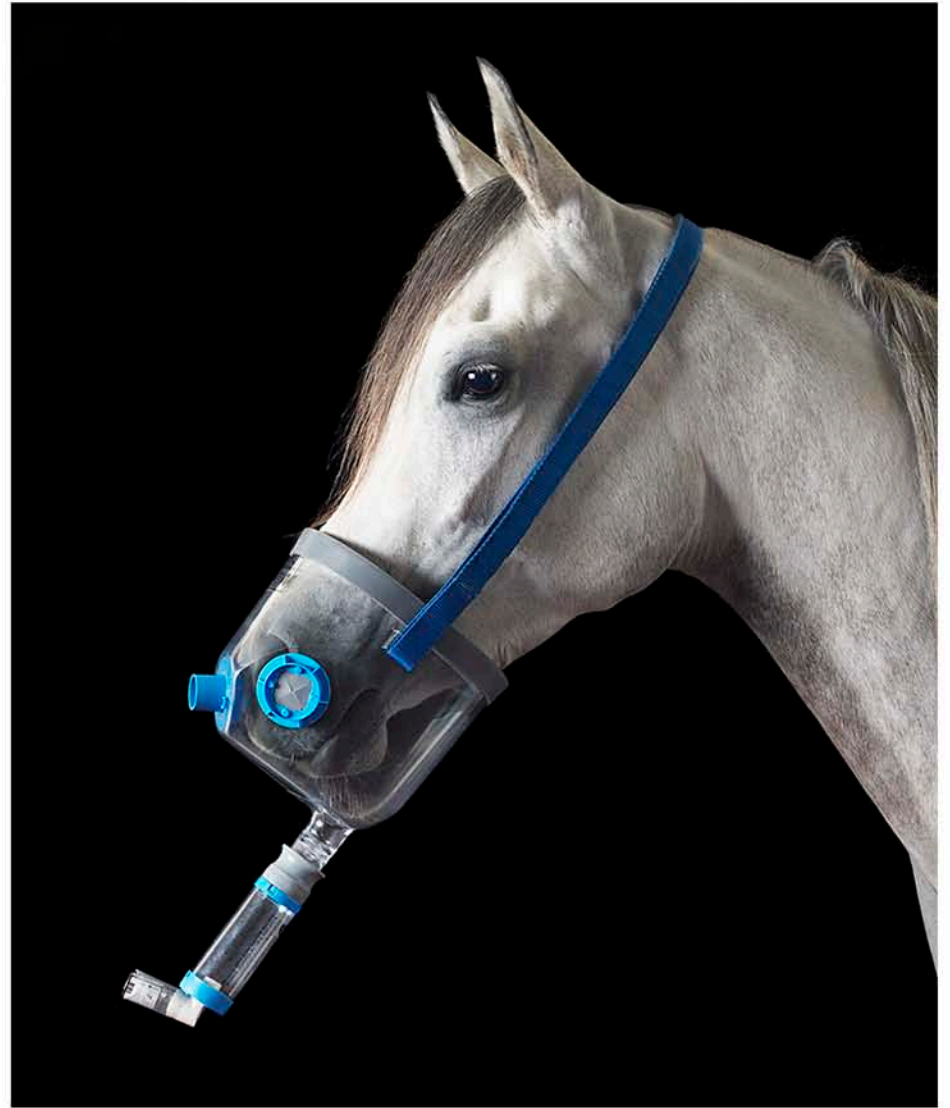
The close-up of the embryo's eye (p9) is like a plastic-formed toy, just an indent of the shape that will become a complex organ. And the placenta (p13) provokes questions. It is highly ambiguous: more like a leaf than a piece of dead meat.

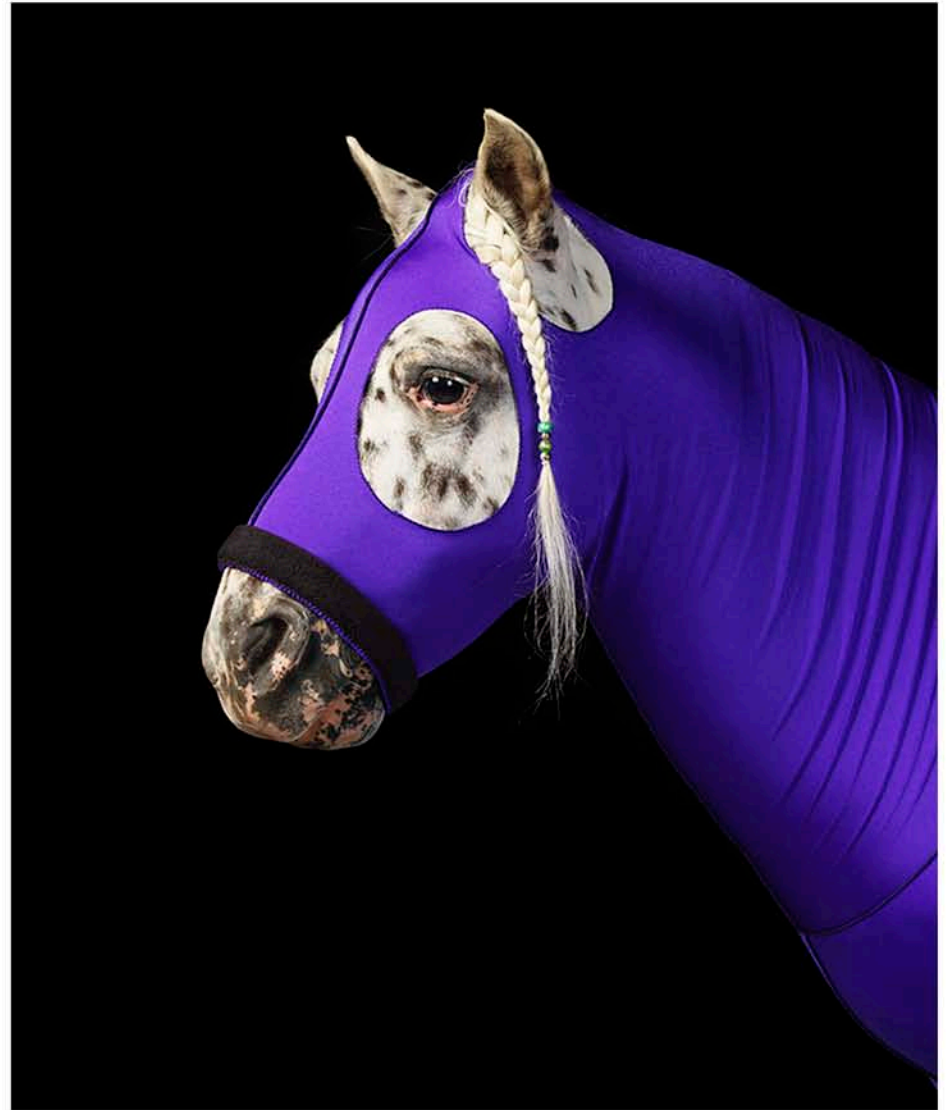
Most of the work is entirely personal, self-commissioned. However, there is the odd photograph that has come out of commercial work. The facing image here was one, although it was not used in the final advertising. It was too ambiguous, it's hard to distinguish easily as a horse, but that makes it interesting for the book.

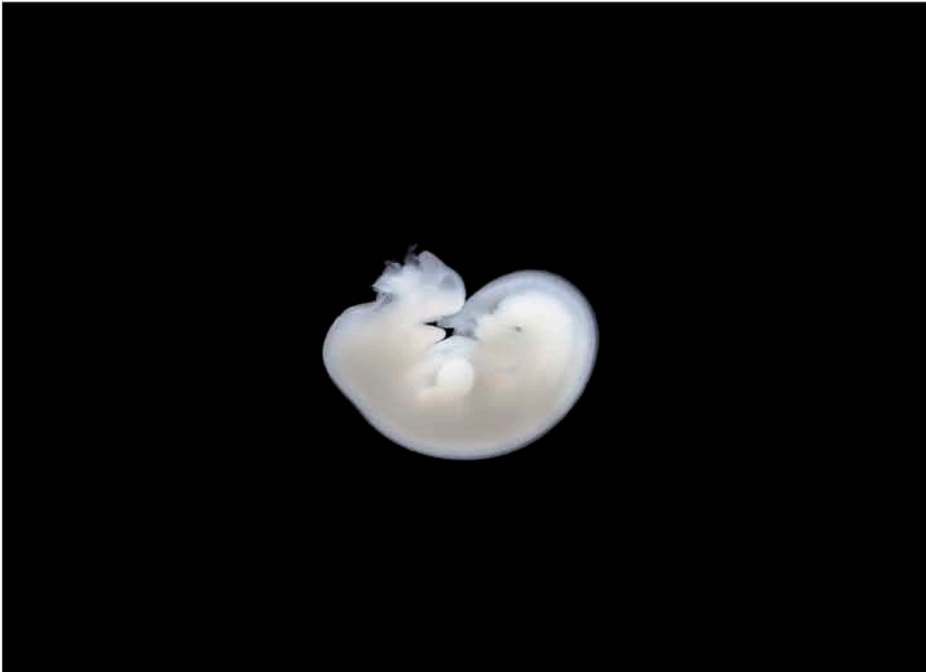
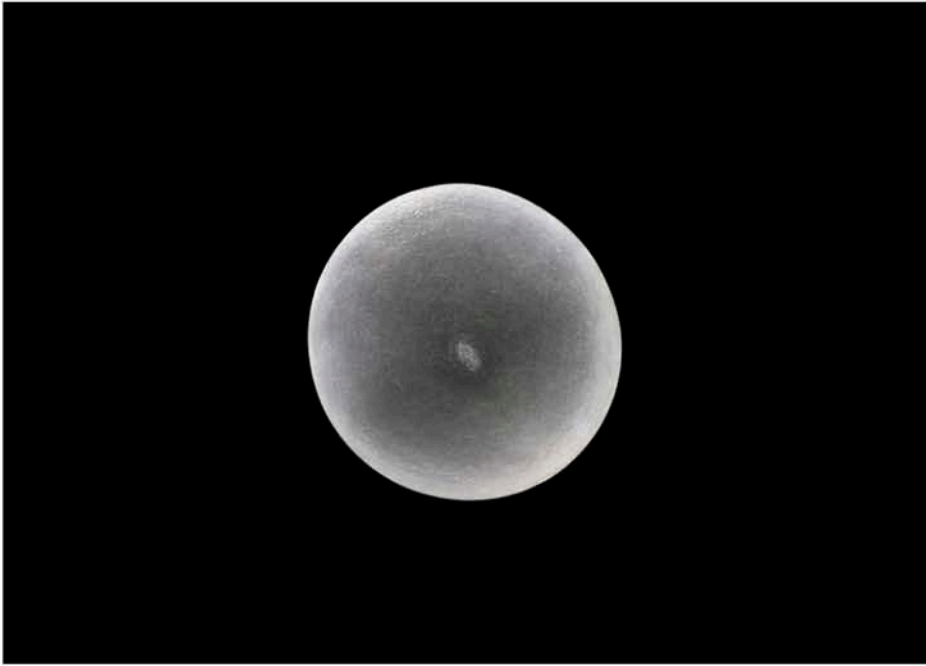
Through this project, I simply want to extend people's experience of the subject. Geographically and through technology I am putting in the effort, but it is the deep visual exploration that I hope gives insight and might provoke curiosity further.

Tim Flach
www.timflach.com





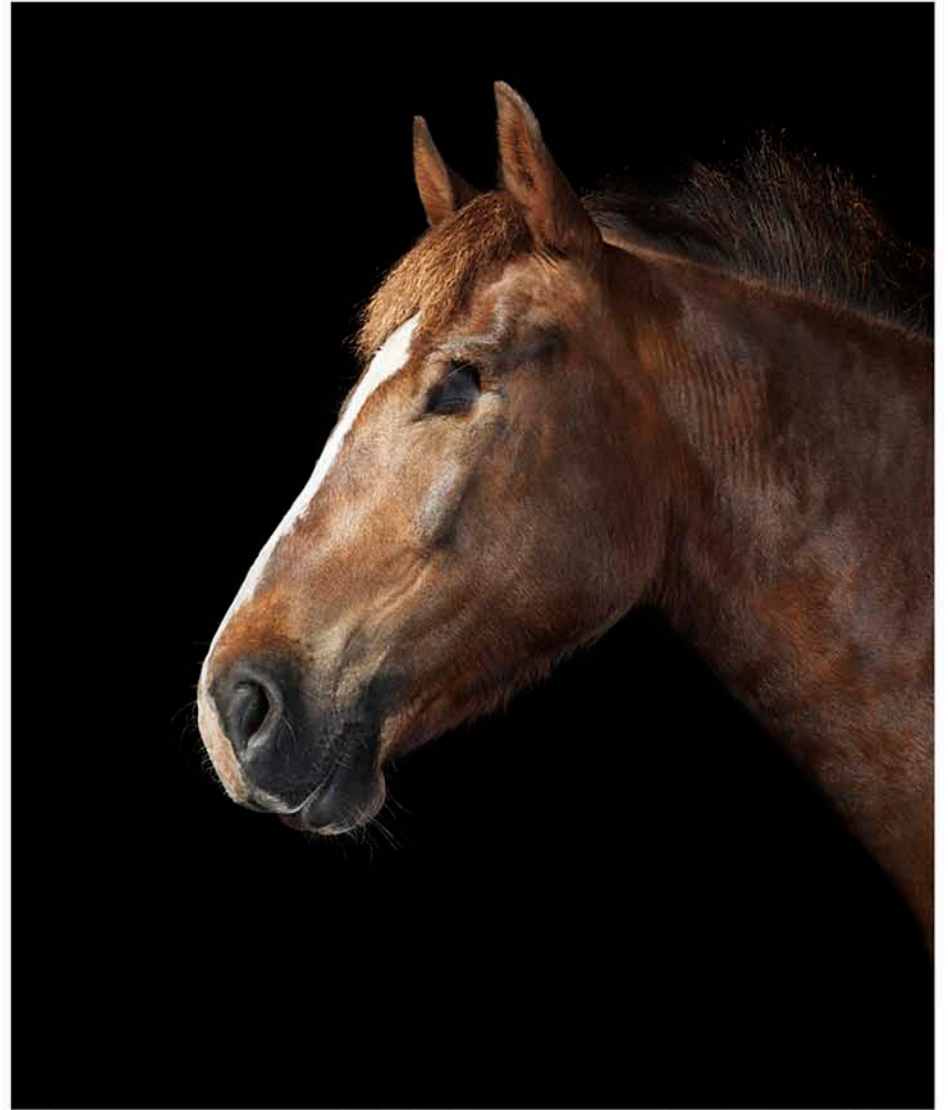














Captions

P3

Dante Neck
March 2004

P4

Equine Eye Surgery Mask
March 2007

P5

Asma Inhaler
March 2007

P6

Fly Net
November 2005

P7

Latex
July 2007

P8

Top
Embryo 10 Days
May 2007
A spherical day 10 equine embryo, approximately 4mm in diameter, with the pre-embryonic inner cell mass (ICM) clearly visible as a lighter streak in the centre. This will eventually give rise to the fetus while the remaining cells will form the placental membranes.

Bottom

Embryo 30 Days
May 2007

P9

Top
Embryo 65 Days
May 2007
Bottom
Embryo Eye 85 Days
September 2007

P10

Embryo 85 Days.
September 2007

P11

Embryo Tail 85 Days.
September 2007

P13

Top
Equine Placenta
May 2007

Network of blood vessels on the inner allantoic (fetal) surface of the equine placenta, with a small section of the red, velvety outer chorionic (maternal) surface also visible on the right of the picture.

Bottom

Albino Eye
July 2006

P14

Blind Eye
March 2007

P15

Apaloosa Eye
July 2006

P16

Elwia's Eyelashes
November 2005

P17

Victim in care at (ILPH) The International League for the Protection of Horses
June 2007

P18

Monty
February 2007

www.timflach.com



Monograph is a new monthly publication from Creative Review. It is our thank you to all our subscribers. Each month, we will publish a personal project or collection of creative work: it may be photographs, illustrations or, as here, posters. Each Monograph will be published as a 20-page A5 booklet included with your copy of CR, tipped on to page 4. It is only available to Creative Review subscribers and will not appear in newsstand copies.

If you would like to subscribe to Creative Review, please go to www.creativereview.co.uk

Printed on ZANDERS ikono matt 200gsm and 135gsm.
www.ikono.de
M-real UK
Telephone: 01795 564945

ZANDERS ikono